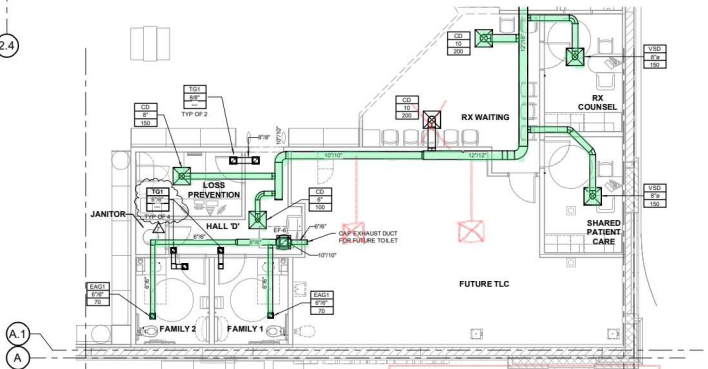
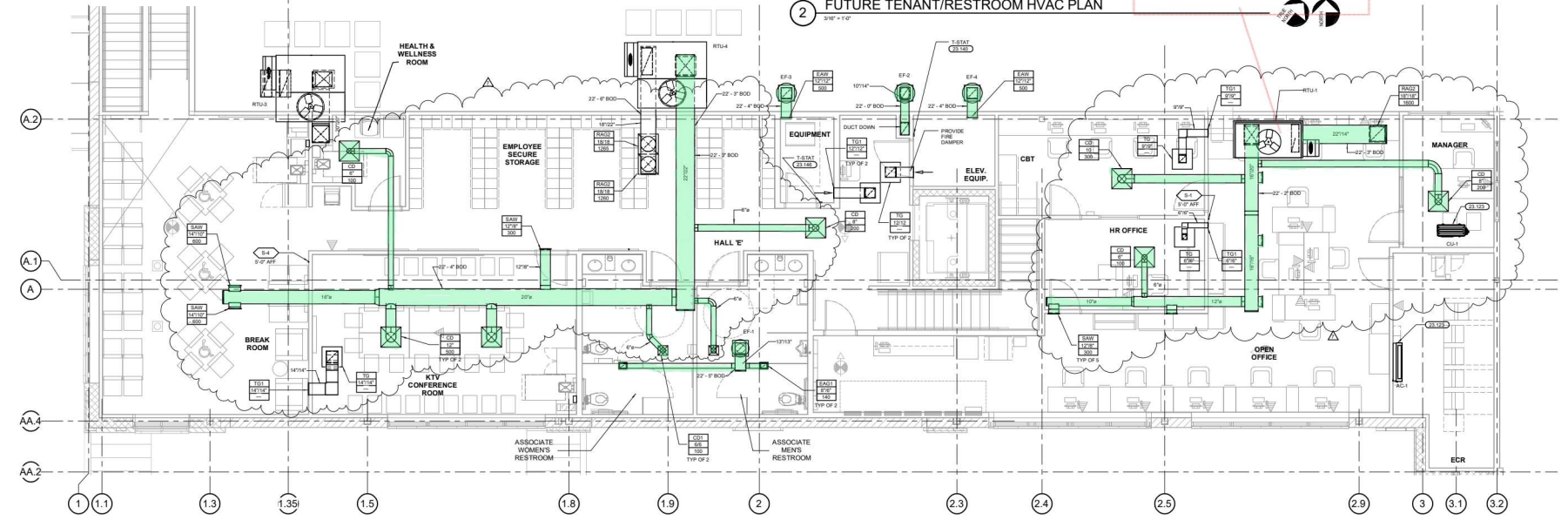


3 SEATING AND FRONT RESTROOM HVAC PLAN - WEST  
1/8" = 1'-0"



2 FUTURE TENANT/RESTROOM HVAC PLAN  
1/8" = 1'-0"



1 HVAC MEZZANINE PLAN  
1/8" = 1'-0"

- ### GENERAL NOTES
- REFER TO ARCHITECTURAL AND STRUCTURAL DRAWINGS FOR EXACT LOCATIONS OF ROOFTOP EQUIPMENT.
  - REFER TO HEATING, VENTILATING & AIR CONDITIONING SCHEDULES FOR GENERAL CONDITIONS FOR EQUIPMENT CONTROLS NOT SHOWN ON HVAC DRAWINGS.
  - LIGHT FIXTURE LOCATIONS HAVE PRESUMED OVER-DIFFUSERS AND GRILLE LOCATIONS. LOCATE DIFFUSERS AND GRILLES TO ACCOMMODATE LIGHTING SCHEMATIC. DO NOT INSTALL DUCTWORK OVERLAPPING EXISTING LIGHTING FIXTURES.
  - TYPICAL BRANCH DUCT FITTING DETAIL IS APPLICABLE THROUGHOUT THE STORE.
  - SUPPLY AND RETURN OUTDOOR FRESH ROOF TOP UNITS TO BE INTERNALLY INSULATED A MINIMUM OF 1/2" FOR SOUND ATTENUATION.
  - HOOD SMALL OVERHEAD EQUIPMENT BELOW BY A MINIMUM OF 6" ON ALL EXPOSED SIDES, EXCLUDING ANY ANCHOR CABINETS OR MAKEUP AIR PLenums.
  - PROVIDE BALANCING DAMPERS FOR EACH DIFFUSER, REGISTER AND GRILLE AT POINTS ON SUPPLY, RETURN, AND EXHAUST SYSTEMS WHERE BRANCHES LEAD OFF FROM MAINLINE DUCTS OR IN DIFFUSERS AS REQUIRED FOR AIR BALANCING. MINIMUM A MINIMUM OF TWO JACK BOLTS FROM EACH SIDE OF THE DUCT TO BE SHOWN ON DRAWING. PROVIDE ACCESS PANELS WHERE DAMPERS MUST BE INSTALLED ABOVE NON-ACCESSIBLE CEILING.
  - PROVIDE TURNING VANES IN ALL RECTANGULAR MITERED ELBOWS.
  - REGISTER'S TO CEILING DIFFUSERS ARE THE SAME SIZE AS THE DIFFUSER REGULARLY NOTED OTHERWISE.
  - ONLY ITEMS REQUIRED FOR THE OPERATION OF THE ELEVATOR SHALL BE IN OR PASS THROUGH THE ELEVATOR COURSE/POOR ROOM.
  - INSTALL FLEES A MINIMUM OF 1/2" FROM ROOF EDGE AND MINIMUM OF 1/2" FROM EXISTING EXHAUST FANS A MINIMUM OF 12" FROM OUTSIDE AIR INTAKE. INSTALL EXHAUST FANS WITH MAKEUP AIR UNITS AND ROOF TOP UNITS A MINIMUM OF 12" FROM ROOF EDGE.

### MECHANICAL SYMBOLS

	RECTANGULAR DUCT 18" WIDE BY 12" DEEP
	12" DIAMETER ROUND DUCT
	SUPPLY DUCT IN SECTION
	RETURN OR EXHAUST DUCT IN SECTION
	ELBOW WITH TURNING VANES
	TEE WITH TURNING VANES
	RECTANGULAR RADIUS ELBOW
	RECTANGULAR TEE
	ROUND OR OVAL ELBOW
	VOLUME CONTROL DAMPER
	SUPPLY AIR DIFFUSER WITH ROUND SUPPLY DUCT
	RETURN OR EXHAUST AIR DIFFUSER WITH ROUND DUCT
	DIFFUSER OR GRILL TYPE BRANCH DUCT AND/OR NECK SIZE 206
	THERMOSTAT
	TEMPERATURE-HUMIDITY SENSOR
	TEMP SENSOR
	HOOD ANGLE PULL STATION

- ### KEYNOTES
- 22-123 REVERSE FLOW DUCT SYSTEMS PROVIDED WITH LOW AMBIENT KIT AND FIBER BARRIERS WITH OR WITHOUT RETURN AIR FILTERS. RECOMMENDATION: ROUTE REFRIGERANT LINES FROM ROOF TO CONDENSING AREA PER MANUFACTURER'S INSTRUCTIONS. ROUTE UNMILKATED CONDENSATE TO BE DRAIN IN AREA DESIGNED TO DRAIN INTO 1" OR GREATER.
  - 22-140 CONTRACTOR TO PROVIDE REVERSE ACTING THERMOSTAT FOR FAN. FAN TO ENERGIZE WHEN ROOM REACHES 90 DEGREES F.

NOTE TO ALL CONTRACTORS: BULLETIN NO. 1 REVISIONS TO THE DRAWINGS ARE CIRCLED AND BULLETIN NO. 2 REVISIONS ARE ADDITIONAL REVISIONS INCORPORATED INTO THE DRAWINGS THAT ARE NOT CIRCLED. THESE REVISIONS WILL BE RELEASED AS BULLETIN NO. 2 TO BE RELEASED AT A LATER DATE. AT THIS TIME, REVISIONS INCLUDING BULLETIN NO. 1 WILL BE RELEASED AS REVISION DELTA 2 FOR THE PURPOSES OF BULLETIN 1. I UPGRADE THE UNMARKED REVISIONS AT THIS TIME.



DATE: 09/15/2018  
 PROJECT: 1801 West Beaver Lane 2212 - Crockett, TX 75826  
 DRAWING: 1801 West Beaver Lane 2212 - Crockett, TX 75826  
 SHEET: 1801 West Beaver Lane 2212 - Crockett, TX 75826  
 SCALE: 1/8" = 1'-0"



CONSULTANTS  
 CONSULTATION FOR REUSE  
 THIS DRAWING HAS BEEN REUSED FROM AN EXISTING PROJECT. THE REUSE OF THIS DRAWING IS SUBJECT TO THE TERMS AND CONDITIONS OF THE ORIGINAL PROJECT'S CONTRACT. ANY REUSE OF THIS DRAWING WITHOUT THE WRITTEN PERMISSION OF THE ORIGINAL PROJECT'S CONTRACTOR IS PROHIBITED.

CHECKED BY: DCZ  
 DRAWN BY: R03

David P. Hissell  
 P.E.  
 LICENSE NO. 88789  
 EXPIRES 09/15/2021



ISSUE/REVISION  
 90% PROGRESS REVIEW  
 03/31/16  
 PERMIT ISSUE

1	ADDENDUM 01	05/09/18
5	BULLETIN 01	09/05/17
7	BULLETIN 03	09/15/17

PROJECT TITLE  
 KROGER STORE  
 SW 582

US 287 & Sulzer Rd  
 Houston, TX 77057  
 COMMISSION NO.: 515430  
 SHEET NO.: 02/21/18  
 SHEET TITLE  
 HVAC ENLARGED PLANS

SHEET NO.  
**M1.1c**

THIS DOCUMENT IS THE PROPERTY OF DAVID P. HISSSELL ARCHITECTS, INC. MEMBER THE FIRM OF THE INFORMATION IT CONTAINS MAY BE COPIED OR REPRODUCED IN ANY MANNER WITHOUT THE EXPRESS WRITTEN PERMISSION OF DAVID P. HISSSELL ARCHITECTS, INC.  
 PROJECT: 1801 West Beaver Lane 2212 - Crockett, TX 75826